

Corso

Beam clamps for material handling

Corso beam clamps for material handling

The Corso beam clamp range can be quickly and easily assembled onto a steel beam, creating a reliable anchor point for lifting equipment such as Tirfor, Bravo, Tralift, Minifor and Tralift TT.

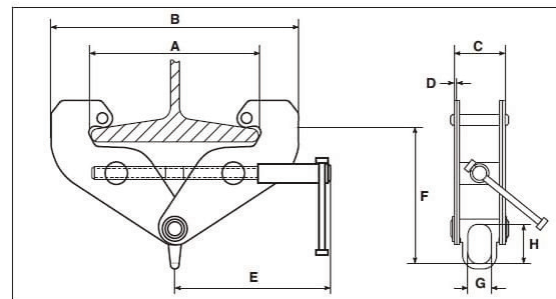
- WLL from 1t to 10t
- For beam widths from 75 - 320 mm depending on capacity
- Easy width adjustment to the size of the steel beam
- Generously sized body made of steel alloy
- High stability when fixed correctly
- Spindle bar is locked from rotating by tightening a grub screw



Model	WLL	Flange Width (mm)	Weight (kg)	Product Code
LT-1B	1,000	75-230	4.8	7009
LT-2B	2,000	75-230	5.6	7019
LT-3B	3,000	80-330	11	7029
LT-5B	5,000	80-330	12.3	7039
LT-10B	10,000	80-320	21	7049

Corso beam clamps for material handling

Model	A	B	C	D	E	F	G	H
LT-1B	220	180/380	76	4	210	120/175	30	45
LT-2B	220	180/380	84	6	210	130/180	30	45
LT-3B	320	235/490	115	8	275	175/250	45	60
LT-5B	320	253/490	138	10	245	140/220	45	60
LT-10B	310	255/480	160	12	275	250/300	60	90





Corso geared beam trolleys

corso Manual-Geared Trolley For Transporting Materials

Model	WLL	Flange Width (mm)	Weight (kg)	Product Code
1000	1,000	58 - 220	19	23339
2000	2,000	66 - 220	22.5	23349
3000	3,000	74 - 220	37.5	23359
5000	5,000	90 - 220	55	23369
1000	1,000	160 - 320	19	108929
2000	2,000	160 - 320	22,5	108939
3000	3,000	160 - 320	37,5	108949
5000	5,000	180 - 320	55	108959
10000	10,000	142 - 320	115	56289
20000	20,000	153 - 320	254	56299

Model	Product Code
Extra meter of chain for corso	108957



Corso push beam trolleys

corso Push Trolley For Transporting Materials

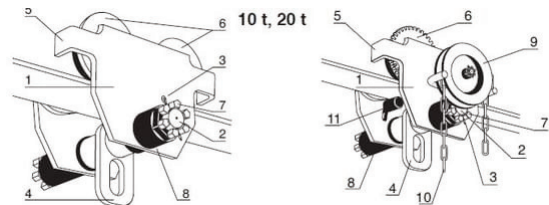
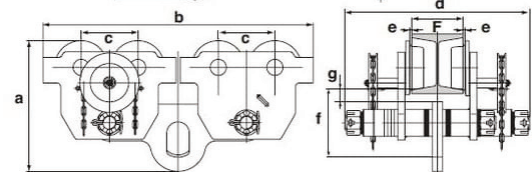
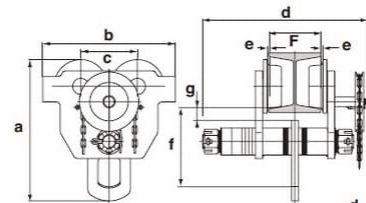
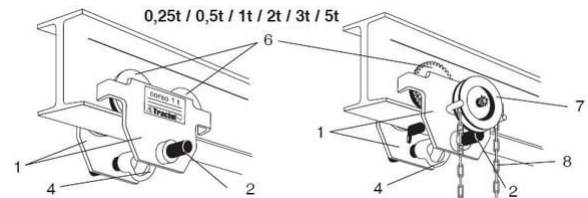
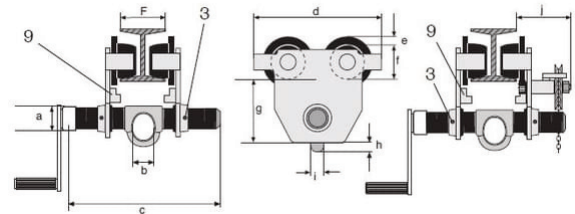
Model	WLL	Flange Width (mm)	Min.Radius (mm)	Weight (kg)	Product Code
C250	250	45 - 152	650	3.5	69289
C500	500	50 - 220	900	8.5	23309
C1000	1,000	58 - 220	1 000	10.5	23319
C2000	2,000	66 - 220	1 200	18	23329
C3000	3,000	74 - 220	1 300	32	23379
C5000	5,000	90 - 220	1 400	48.5	23389
C500	500	160 - 320	900	8,5	108879
C1000	1,000	160 - 320	1 000	10,5	108889
C2000	2,000	160 - 320	1 200	18	108899
C3000	3,000	160 - 320	1 300	32	108909
C5000	5,000	180 - 320	1 400	48,5	108919
C10000	10,000	142 - 320	2 500	105	56279

0.25 t to 5 t

WLL	A	B	C	D	E	F	G	H
250	22	22	220	175	11	50	74	7
500	27	25	324	225	15	62	88	16
1,000	30	30	334	252	15	62	103	17
2,000	38	40	342	300	18	80	127	18
3,000	45	48	358	360	15	97	177	18
5,000	52	58	372	400	20	110	192	23

In mm.

- | | |
|------------------------------------------------------|--------------------------------------------|
| 1. Trolley side plates | antideraling devices |
| 2. Threaded bar | 6. Running wheels |
| 3. Securing screw for preventing the bar from moving | 7. Operating wheel |
| 4. Anchor point for hoist | 8. Operating chain |
| 5. End stops acting as | 9. Anti-tilt system welded onto side plate |



10 t to 20 t

Model	Description	A	B	C	D	E	F	G
C10000	Push trolley	500	470	200	550	2,5	280	45
10000	Geared trolley	500	470	200	583	2,5	280	45
20000	Geared trolley	500	955	200	654	2,5	270	45

In mm.

- | | |
|---------------------------------------|--------------------|
| 1. Trolley side plates | 6. Running wheels |
| 2. Fixing bar | 7. Fixing nut |
| 3. Saftey pin | 8. Spacer washers |
| 4. Anchor point | 9. Operating wheel |
| 5. Safety bar and traversing end stop | 10. Hand chain |
| | 11. Anti-tilt bar |

Extension Bar For corso Trolleys

Model	Flange Width (mm)	Description	Product Code
0.5	160-320	to suit 0.5t push trolley 023309	14652
1T	160-320	to suit 1t push trolley 023319 and 1t geared trolley 023339	14662
2T	160-320	to suit 2t push trolley 023329 and 2t geared trolley 023349	14672
3T	160-320	to suit 3t push trolley 023379 and 3t geared trolley 023359	14682
5T	180-320	to suit 5t push trolley 023389 and 5t geared trolley 023369	14692

Construction clamps

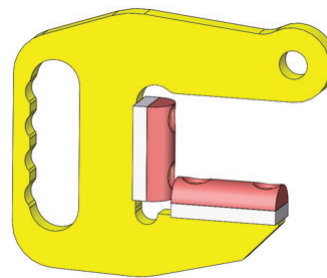
F lifting hook for pipe sections



F Hook



F Hook PVC version



F Hook PU version

Made in France

- Lifting of horizontal pipes or tubes
- Large capacity hooks
- Quick and easy to use
- Coating possible
- Capacity from 1 to 15 t/pair

Model	WLL	Jaw Opening (mm)	Weight (kg)	Product Code
F2 0-60	1,000	0-60	2	189028
F5 0-75	2,500	0-75	5	189038
F7.5 0-100	3,250	0-100	7.5	185958
F10 - 0-100	5,000	0-100	15	189048
F15 0-100	7,500	0-100	20	189058

F lifting hook PVC version

for sensitive goods to avoid marking of the surface

Model	WLL	Jaw Opening (mm)	Weight (kg)	Product Code
F2-0-60/IIPVC	1,000	0-60	2	185968
F5-0-75/IIPVC	2,500	0-75	5	185978
F7.5-0-100/IIPVC	3,250	0-100	7.5	185988
F10-0-100/IIPVC	5,000	0-100	15	185998
F15-0-100/IIPVC	7,500	0-100	20	189008

F lifting hook PU version

for goods with more stable surface to avoid marking

Model	WLL	Jaw Opening (mm)	Weight (kg)	Product Code
F2-0-45/IIPU	1,000	0-45	2	189078
F5-0-55/IIPU	2,500	0-55	5	189088
F7.5-0-90/IIPU	3,250	0-90	7.5	189098
F10-0-90/IIPU	5,000	0-90	15	189108
F15-0-90/IIPU	7,500	0-90	20	189118

Construction clamps

TB Lifting Hook For Pipe Sections

- Quick and easy to use
- Coating possible
- Capacity from 1 to 15 t/pair

Model	WLL	Jaw Opening (mm)	Weight (kg)	Product Code
TB1 0-150	500	0-150	4	50798
TB2 0-200	1,000	0-200	9	50808
TB3 0-250	1,500	0-250	15	50818
TB1 0-125-PU	500	0-125	4	189128
TB2 0-175-PU	1,000	0-175	9	189138
TB3 0-225-PU	1,500	0-225	15	189148

2-legged chain sling with shackles for TB hooks

Slings 2 x TB1/ < 1000 kg

Model	Jaw Opening (mm)	Product Code
E2W01600HR/1000	1 400	191708
E2W01600HR/2000	2 800	191718
E2W01600HR/3000	4 200	191728
E2W01600HR/4000	5 600	191738
E2W01600HR/5000	7 000	191748

Slings 2 x TB2/ < 2000 kg

Model	Jaw Opening (mm)	Product Code
E2W04000HR/1000	1 400	191808
E2W04000HR/2000	2 800	191818
E2W04000HR/3000	4 200	191828
E2W04000HR/4000	5 600	191838
E2W04000HR/5000	7 000	191848

Slings 2 x TB3/ < 3000 kg

Model	Jaw Opening (mm)	Product Code
E2W04100HR/1000	1 400	191858
E2W04100HR/2000	2 800	191868
E2W04100HR/3000	4 200	191878
E2W04100HR/4000	5 600	191888
E2W04100HR/5000	7 000	191898



Made in France

Construction clamps

TI - Lifting Clamp For Round Materials and Pipe Sections

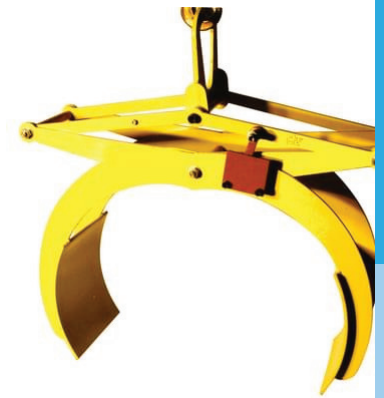
- Clamps for lifting & laying horizontal pipes in trenches
- Transport and/ or laying in trenches of pipes, bars, tubes...
- Manufacture without load bearing welds
- Hot epoxy coating
- Safety factor: 3 (EN 13155.2003 norm)
- Chloroprene coating for sensitive goods to avoid marking of the surface

Model	WLL	Jaw Opening (mm)	Weight (kg)	Product Code
TIA05 230-400	500	230-400	37	50948
TIS05 230-400	500	230-400	35	50938
TIA1 450-900	1,000	450-900	64	50988
TIS1 450-900	1,000	450-900	64	50978
TIA05 380-650	500	380-650	39	50968
TIS05 380-650	500	380-650	39	50958
TIA 380-650 CR	500	380-650	39	189188
TIS 380-650 CR	500	380-650	39	189178
TIA 230-400 CR	500	230-400	37	189168
TIS 230-400 CR	500	230-400	35	189158
TIA1 450-900 CR	1,000	450-900	64	189208
TIS1 450-900 CR	1,000	450-900	64	189198

S = Automatic laying down

A = Automatic clamping and laying down

CR = Chloroprene coating



Made in France

Vertical plate clamps



KF clamp

- Vertical lifting
- Handling of unit steel loads
- Spring safety system
- Hardness 300 HB

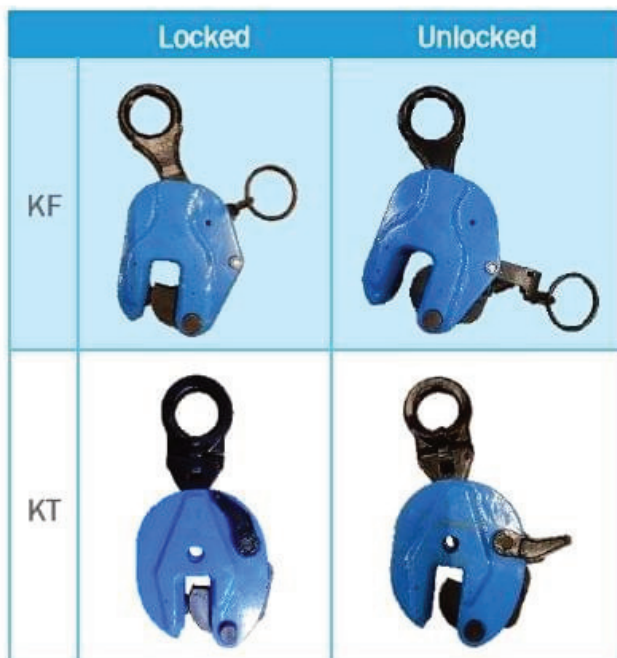
Model	WLL	Jaw Opening (mm)	Weight (kg)	Product Code
KF 1 0-22	1,000	0-22	3.8	189418
KF 2 0-30	2,000	0-30	6.3	189428
KF 3 0-35	3,000	0-35	9.6	189438
KF 5 0-50	5,000	0-50	19	189448



KT clamp

- Lifting and tilting, vertical to horizontal
- Handling of unit steel loads
- Spring safety system
- Hardness 300 HB

Model	WLL	Jaw Opening (mm)	Weight (kg)	Product Code
KT 0.5 0-15	500	0-15	2	189918
KT 1 0-20	1,000	0-20	4.5	189928
KT 2 0-25	2,000	0-25	7.3	189938
KT 3 0-30	3,000	0-30	15	189948
KT 5 0-50	5,000	0-50	21.6	189958
KT 8 45-80	8,000	45-80	38.3	189968



Vertical plate clamps

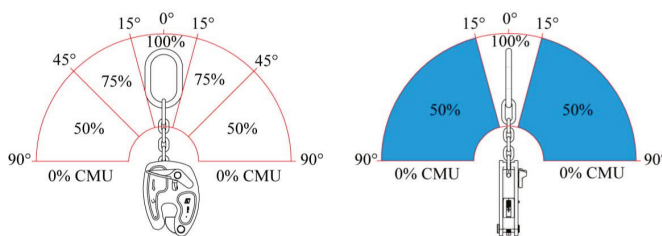
KS - Multi-Position Lifting Clamp

- Horizontal and vertical use
- Manual release
- One-sided mark
- Spare parts kits available.
- Safety coefficient according to EN 13155
- Pliers tested individually before delivery
- Hot epoxy coating
- Hardness up to 300 HB

Model	WLL	Jaw Opening (mm)	Weight (kg)	Product Code
KS075 0-15	750	0-15	1.55	50238
KS1 0-20	1,000	0-20	3.5	50248
KS2 0-25	2,000	0-25	6.26	50258
KS3 0-30	3,000	0-30	12.1	50268



USE



		LIFTING	TURNING
VERTICAL PLATE	ONE CLAMP	 WLL at 100% +/- 15° around the vertical	 WLL reduced with 50%
	2 CLAMPS WITHOUT LIFTING BEAM	 WLL reduced with 50% if lifting angle exceeds 30°	
HORIZONTAL PLATE	ONE CLAMP		 WLL reduced with 50%
	2 CLAMPS WITH LIFTING BEAM	 WLL reduced with 50%	
	2 CLAMPS WITHOUT LIFTING BEAM	 WLL reduced with 50%	

Vertical plate clamps



Made in France

NK - Automatic Lifting Clamp

- Horizontal and vertical use
- Closes automatically
- Manual release
- Hot epoxy coating
- Hardness up to 330 HB

Model	WLL	Jaw Opening (mm)	Weight (kg)	Product Code
NK1 0-20	1,500	0-20	4	50288
NK1 20-40	1,500	20-40	6	50298
NK1 40-60	1,500	40-60	6	50308
NK2 0-30	3,000	0-30	13	50318
NK2 30-60	3,000	30-60	15	50328
NK2 60-90	3,000	60-90	17	50338
NK3 0-40	4,500	0-40	25	50348
NK3 40-80	4,500	40-80	26	50358
NK3 80-120	4,500	80-120	27	50368
NK5 0-50	7,500	0-50	42	50378
NK5 50-100	7,500	50-100	50	50388
NK5 100-150	7,500	100-150	60	50398



Made in France

NX - NXR Automatic Lifting Clamp

- Non-marking
- Horizontal and vertical use
- Closes automatically
- Manual release
- Hot epoxy coating

Model	WLL	Jaw Opening (mm)	Weight (kg)	Product Code
NX05 0-20	500	0-20	4.5	50408
NX1.5 0-30	1,500	0-30	11	50418
NXR05 0-100	500	0-100	6	50428
NXR05 20-120	500	20-120	5.8	50438
NXR05 40-140	500	40-140	6	50448



Horizontal plate magnets

magfor™ - Permanent magnet lifters

Magfor II Lifting Magnet

- Permanent magnet lifter
- Capacity up to 5t
- Very powerful
- Large lifting eye
- Robust
- Use: -20 to +80 °C

Model	W.L.L. (Plate/Flat)	W.L.L. (Round)	Weight (kg)	Product Code
magfor™ II 100	100	50	4	185438
magfor™ II 300	300	125	9.5	185448
magfor™ II 500	500	215	18	185458
magfor™ II 1000	1 000	450	41.5	185468
Magfor™ II 2000	2 000	800	113	185478
magfor™ II 3000	3 000	1 200	190	192138
magfor™ II 5000	5 000	2 400	400	192148



Magfor™ II HT Lifting Magnet

- Permanent magnet lifter
- High-temperature applications
- Material: $\leq +250$ °C
- In accordance with EN 13155:2003 standard

Model	W.L.L. (Plate/Flat)	W.L.L. (Round)	Weight (kg)	Product Code
magfor™ II 200 HT	200	100	9.5	185518
magfor™ II 400 HT	400	200	18	185548
Magfor II 800 HT	800	400	41.5	185578



Horizontal plate clamps

magfor™ - Permanent magnet lifters



Magfor II HO Lifting Magnet

- Permanent magnet lifter
- 4 thread holes
- Customized assembly
- In accordance with EN 13155:2003 standard

Model	W.L.L. (Plate/Flat)	W.L.L. (Round)	Weight (kg)	Product Code
magfor™ II 100 HO	100	50	4	185508
magfor™ II 300 HO	300	125	9.5	185538
Magfor II 500 HO	500	215	18	185568
magfor™ II 1000 HO	1 000	450	41.5	185588



magfor™ II TP Lifting Magnet

- Permanent magnet lifter
- Designed to separate thin plates in a bundle
- Separating thin plates
- Unique magnetic field

Model	W.L.L. (Plate/Flat)	Weight (kg)	Product Code
magfor™ II 180 TP	180	9.5	185528
magfor™ II 300 TP	300	18	185558

